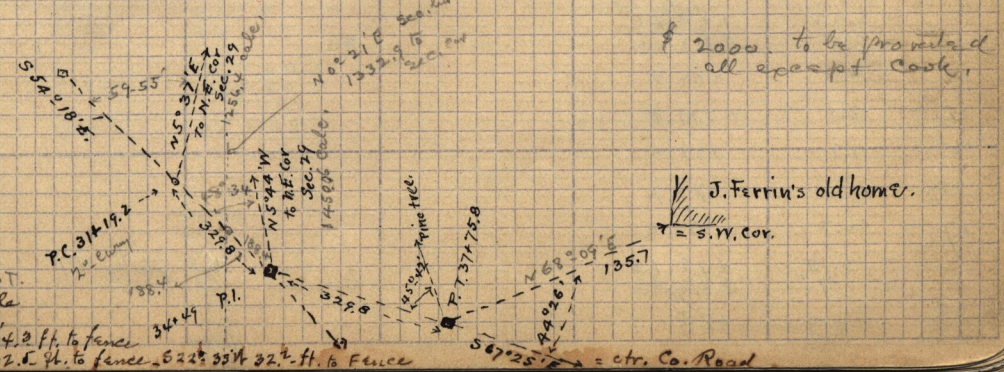


Liberty Cutoff

- Sta. 0 = ctr. of Cutoff on W. line of S. E. 1/4 Sec. 20, T. 7. N. R. 1 E., N. 0° 08' E., 550.1 ft. from S.W. cor. and 138.6 ft. S. of fence running E. thence S. 54° 18' E. along ctr. (preliminary)
- Sta 0+41.4 = Fence N. 4 S. on E. side Co. Road -
- " 0+89 = fence bears S 67° 10' E. pasture & N. 67° 10' W.
- 5+47.5 = Fence bears N 9° 07' E & S 9° 07' W
- 6+95 = N. bank Spring Creek = N. E.
- 7+06 = 5 "
- 7+64 = Fence N. 4 S. 40 ft S. of Cor.
- 8+24.3 = N.E. cor. Pig Corral. Bears N 37° W. 55 ft. to N.W. cor. S. 59 ft. to N.W. cor. shed
- 9+00 The N.E. cor. Slab shed bears S 25° W. 23 ft. = 54 ft. S. W. 20 ft. N. 4 S.
- 9+51.13 = Sec. line at point 775.73 ft. S 82° 38' E. from N.W. cor. on N. line 366.132 =
- 9+66.5 = Fence N. 53° 30' W. 54.4 ft. to Slab shed - S 83° 30' E. 45.1 ft. to Garage
- 9+66.5 N 60° 50' E. 109 ft. to N.W. cor. porch D. Cook 1/4 Sta. from Pos. 36° 54' W. by 34.2 ft. to
- 10+00 S 73° 13' W. 103.5 ft. to N.E. cor. barn, N 53° 30' W 54 ft & S 6° 30' W 34 ft
- 10+00 N 51° E. 23 ft. to S.W. cor. Garage, from 12 ft. E. W. 6 1/2 ft. N. 4 S.
- 10+00 S 32° 40' W. 77 ft. to N.E. cor. tool house shed & Granary
- 10+00 S 34° 00' W 85 ft. to N.W. cor. tool house shed & Granary 14 x 47.4 ft.
- 10+45 fence N 42° 55' E. and S 42° 55' W.
- 10+77 fence bears N 66° E. 266.0 ft on N. side alley to Creek. x S 66° W
- 10+87 Hub.
- 10+88 fence bears N. 66° E. & S 66° W. on S. side alley - enter below land.
- 1/2 day C.W. Walker } claim
- 16+39 Fence bears S 0° 25' W & N 0° 25' E. enter grain field
- 23+66.5 Fence " S. 0° 25' W. & N. 0° 25' E. on N. bank water ditch 5' deep. 4' wide

S 54° 18' E

- P.C. 31+19.2 - Curve 2° L.
- 32+60.6 = point on Sec. line 1332.9 ft S 0° 25' W. from N.E. cor. Sec. 29 - T. 7. N. R. 1 E.
- 32+64 (on tang.) Fence N. 0° 17' E. & S. 0° 17' W. on E. line Sec. 29, T. 7. N. R. 1 E.
- 34+48 (on tang.) small spring branch leads E. & W.
- P.I. 34+49 (Center of Co. Road would intersect here if produced, bears N 67° 25' W.)
- Angle of intersection 132° 08' - I adopt this as P.I.
- 34+67 s. bank of small spring branch N. E. by.
- 36+00 (on tang) fence on N. side Co. Road - bears S 83° 17' W. & N 83° 17' E
- + 85.7 = distance on curve
- 36+55.8 = hub on tang, ctr. present traveled Road, S 83° 17' W.



References to P.T.
 E. 77.4 ft. to pole
 N. 60.8 " " "
 N 67-25° W 94.3 ft. to fence
 N 22-35° E 32.5 ft. to fence - S 22° 55' W 32.2 ft. to fence